

Speed Impacts of an Icy Curve Warning System

David Veneziano and Jared Ye

Western Transportation Institute – Montana State University

Ian Turnbull

Chief, Office of ITS Engineering and Support, Caltrans District 2

Transportation Research Board

91st Annual Meeting

January 23, 2012

Overview

- Introduction
- System overview
- Past work
- Data
- Methodology
- Results
- Discussion
- Conclusions

Introduction

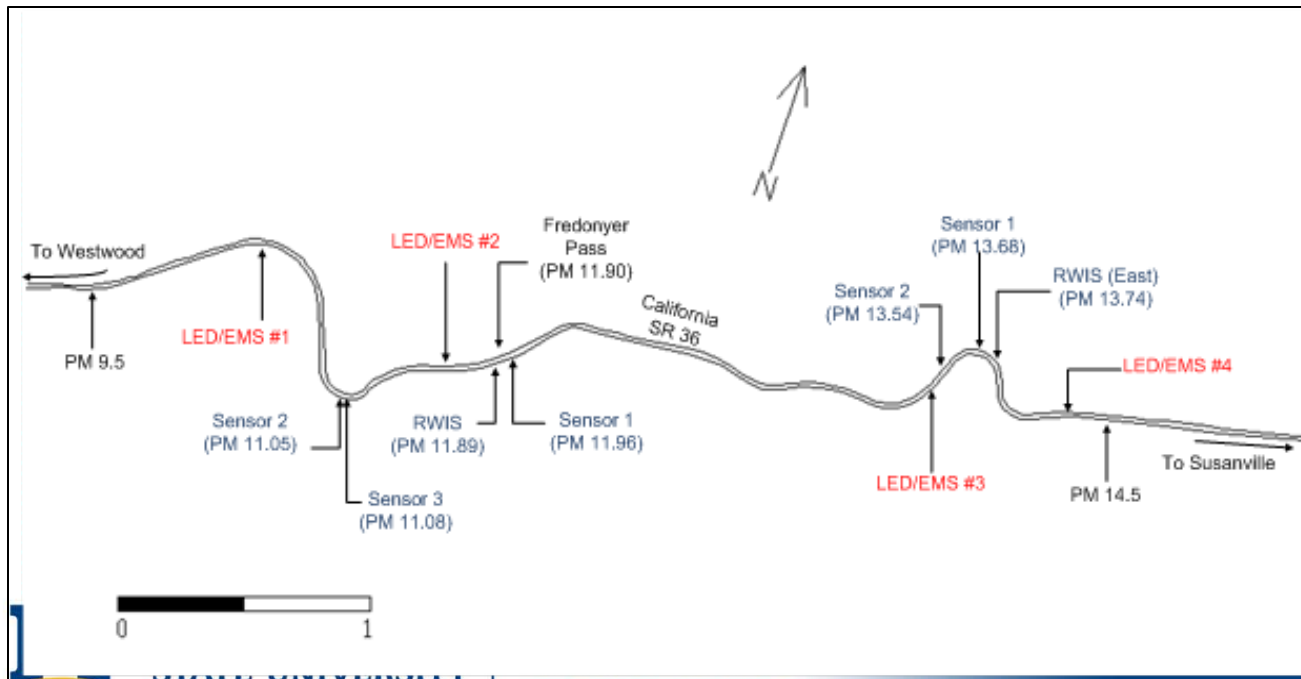
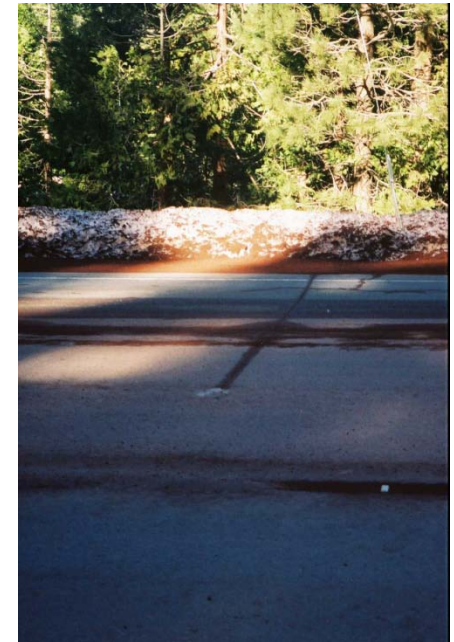
- Caltrans continually identifies and remedies safety challenges in its infrastructure
- One location identified by Caltrans District 2 was a five-mile segment of Fredonyer Pass
- Section of roadway had history as high-crash location
- Speeding a major cause of accidents, which occurred when pavement was icy
 - Static signage previously installed to increase awareness
- Based on the crash history, Caltrans deployed Icy Curve Warning System (ICWS) to reduce ice-related accidents



System Layout

- Five-mile section PM 9.5 - PM 14.5
- Two Extinguishable Message Signs used in each direction to warn motorists (“Icy Curves Ahead”)
- Three ice detection sensors installed for the system.
 - Sensor 1 located in curve at top of grade, sensors 2 and 3 located in curve that tends to stay wet due to the trees present on both sides of the road
- For each system, two EMS activated if ice is detected or predicted by one of the ice and ESS sensors
- Complete system considered operational and reliable beginning with the winter season of 2008-2009
- **Objective of this study was to evaluate effects of the ICWS on vehicle speeds under different conditions**

System Layout cont'd





Past Work

- Oregon (2005) - Oregon Highway 140 ice warning system
 - Mean speeds fell 9.5 mph overall (eastbound by 10.4 mph, westbound by 8.4 mph) when signs on
- Wyoming (2001) - Nugget Canyon ice warning system
 - Mean speeds dropped 5 to 10 mph when signs on
- Idaho (1993) – I-84 weather warning system
 - Mean speeds dropped 20 mph during high winds and extreme weather
- Utah (2000s) – visibility warning system
 - Standard deviation of speeds decreased before and after by 22 percent
- Finland (1992) – condition warning system
 - When slippery road present mean speeds dropped by 1.5 mph



Data

- Continuous radar speed data collected by Caltrans near beginning of each set of curves
 - Data periods: March 12, 2009 – April 15, 2009, October 1 2009 – March 31, 2010, October 1, 2010 – April 15, 2011
- System status (displaying ice warning or not)
- Road Weather Information System data from site on the pass to characterize prevailing conditions
 - Used to establish when clear and cold conditions with the potential for ice formation were present at the site

Methodology

- Two-sample t-test (unequal variance) employed to compare vehicle speeds between system conditions/states
 - Speed thresholds of 0, 3 and 5 mph evaluated
 - 0.025 and .05 levels of significance employed
- Evaluation scenarios:
 - On versus off
 - Day versus night
 - Weather - during different conditions (wet, clear, cold and dry, etc.), categorized by day and night
 - Chain control

Methodology cont'd

- Zero mph condition hypotheses were:
 - $H_0: \mu_1 = \mu_2$, mean speeds between non-icy and icy conditions not significantly different
 - $H_1: \mu_1 \neq \mu_2$, mean speeds are significantly different
- 3 and 5 mph hypotheses were:
 - $H_0: \mu_1 - \mu_2 \geq 3$ or 5 , difference between mean speeds of more than 3 or 5 mph was significant
 - $H_1: \mu_1 - \mu_2 < 3$ or 5 , mean speeds were not significantly different from one another at 3 or 5 mph
- In this work, speed differences between clear, cold and dry and clear, cold and not dry conditions were of greatest interest
 - Clear, cold and not dry conditions represented those where a motorist might not expect ice, but ice was present

Results

- System On versus Off
 - Mean speeds significantly different by greater than 5 mph
 - Ranged from 53 to 57 mph when off, 45 to 50 mph when on
- Day versus Night
 - Differences significantly different by greater than 5 mph during both the day and night when on versus off
 - Mean speed reductions ranged between 5.19 and 8.66 mph during day, 5.72 and 8.30 mph during night

Results cont'd

- System impacts during potentially icy conditions of greatest interest to this work
- Scenarios:

Time of Day	Conditions	
	Clear, Cold, and Dry	Clear, Cold, but not Dry
Daytime	<ul style="list-style-type: none"> • No precipitation • Surface Temp < 32F • Surface Status = Dry • ICWS is OFF 	<ul style="list-style-type: none"> • No Precipitation • Surface Temp < 32F • ICWS is ON
Nighttime	<ul style="list-style-type: none"> • No precipitation • Surface Temp < 32F • Surface Status = Dry • ICWS is OFF 	<ul style="list-style-type: none"> • No Precipitation • Surface Temp < 32F • ICWS is ON



Results cont'd

- Wet conditions (snow, rain)
- Mean speeds significantly lower when system on by greater than 5 mph
 - Day: mean speeds fell by 6.20 to 10.73 mph when system on
 - Night: mean speeds fell by 10.34 to 16.14 mph when system on
- Differences expected given road conditions and visibility

Results cont'd

- Clear, cold and dry versus clear, cold and not dry (i.e. icy) conditions
- Significant changes in mean speeds observed between on and off system states
 - Exception – March - April 2009 (small sample)
- Night: mean speeds fell by 2.76 to 3.36 mph when system on
- Day: mean speeds fell by 2.91 to 6.80 mph when system on

Results cont'd

- Mean speed differences greater than 3 mph but less than 5 mph observed
- Limited significant mean speed changes greater than 5 mph
 - Large changes in speed (5+ mph) could not entirely be expected until driver entered a curve
- Encouraging that significant changes greater than 3 mph observed
 - Indicates motorists likely changing speed behaviors prior to entering curves

Results cont'd

- Chain control
- Greatest impact of ICWS when R-1 chain control is in effect
 - R-1 requires chains on all commercial vehicles while all other vehicles must have either snow tread tires or chains on drive axle
- Significant changes greater than 0 mph observed when ICWS was on for all sites (excluding Signs 1 and 2 at night)
- Speed differences also greater than 5 mph at all signs
 - Exception - Sign 3 at night - mean speed difference greater than 0 and less than 3 mph



Discussion

- Drivers traveled close to posted speed limit during clear, cold and dry conditions
- Mean speeds significantly lower than posted speed limit during clear, cold and not dry (icy) conditions
 - Speeds were higher than the 40 mph curve speed limit
- Results indicate speed of clear, cold and dry versus clear cold and not dry conditions are significantly different
 - Unknown if mean speed changes observed in advance of the curves translate into reductions within the curves
- Results indicate speed of clear, cold and dry versus clear cold and not dry conditions are significantly different

Conclusions

- Results of statistical analysis suggest vehicle speeds lower when ICWS is on
 - System on versus off: mean speeds significantly different by 5+ mph
 - Day and night: mean speeds significantly differed by 5+ mph when system on
 - General wet weather: mean speeds significantly differed by 5+ mph when system on during day and night



Conclusions

- Clear, cold and not dry conditions
 - Mean speed differences significant by greater than 3 mph when the system was on both during the day and at night
 - Only limited number of speeds significantly different by greater than 5 mph
 - Appears that ICWS is prompting speed reductions of 3 mph in conditions where icy roads are not necessarily expected
- Chain control: ICWS produced significant differences greater than 5 mph under R-1 control



Disclaimer

The contents of this presentation reflect the views of the authors, who are responsible for the facts and the accuracy of the data herein. The contents do not necessarily reflect the official views or policies of the State of California, the California Department of Transportation or the Federal Highway Administration. This information does not constitute a standard, specification, or regulation. This information is not intended to replace existing Caltrans mandatory or advisory standards, nor the exercise of engineering judgment by licensed professionals.

Acknowledgements

- The California Department of Transportation for vision and financial support
- Sean Campbell – Caltrans Division of Research and Innovation
- The COATS Steering Committee members for review and input
- University Transportation Centers Program

Questions